

Elekta R&D Update

22 January 2015, Utrecht



Elekta R&D Update - 22 January 2015, Utrecht

| | | |
|-------|----------------------|---|
| 11.00 | R&D Update | Niklas Savander <i>President and CEO</i> |
| 11.15 | Atlantic Positioning | Dee Mathieson, <i>SVP Oncology Business Line Management</i> |
| 11.30 | Atlantic Update | Kevin Brown <i>Head of Scientific and Medical Affairs</i> |
| 11.40 | Q&A | All speakers |
| 12.00 | Informal Q&A | Professor Marco van Vulpen <i>Head of Radiation Oncology</i> Professor Jan Lagendijk <i>Head of Radiation Oncology Physics</i> Professor Bas Raaymakers <i>Experimental Clinical Physics</i> |
| 12.50 | Atlantic tour | - |





Elekta R&D update

Niklas Savander

President & CEO

Utrecht, 22 January 2015



Strategic choices

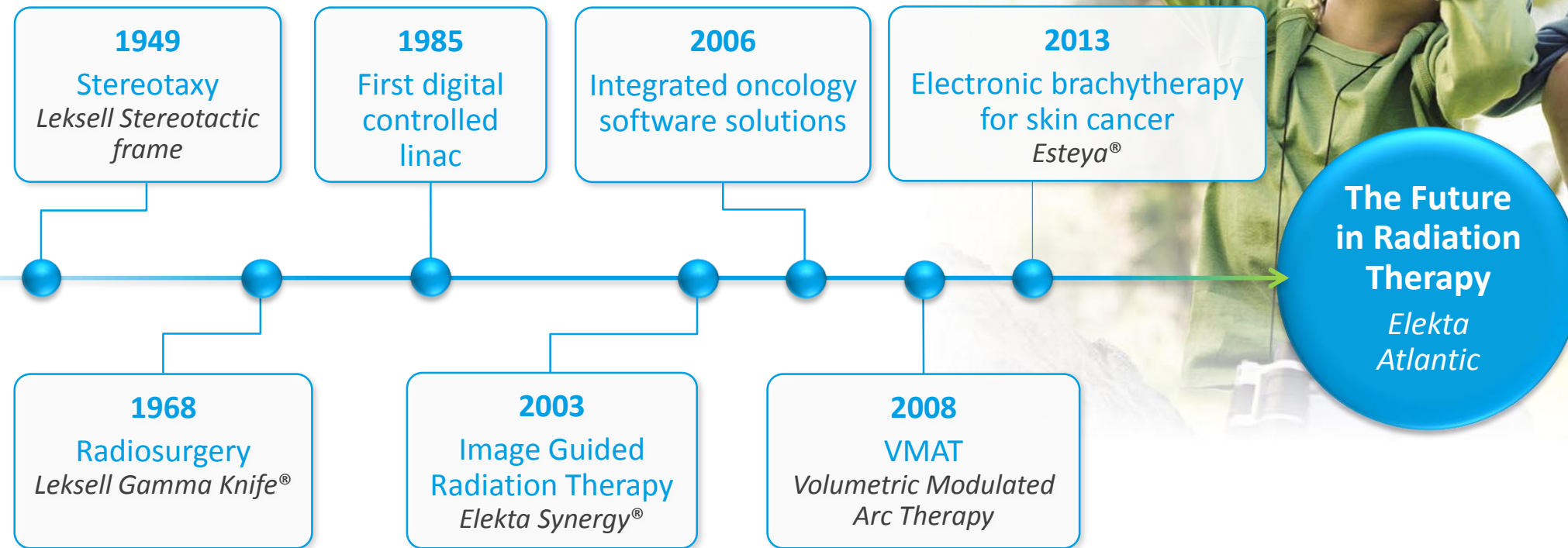
- Emerging markets
- Product innovation
- Software



Strategic agenda for growth



Innovation is in our DNA

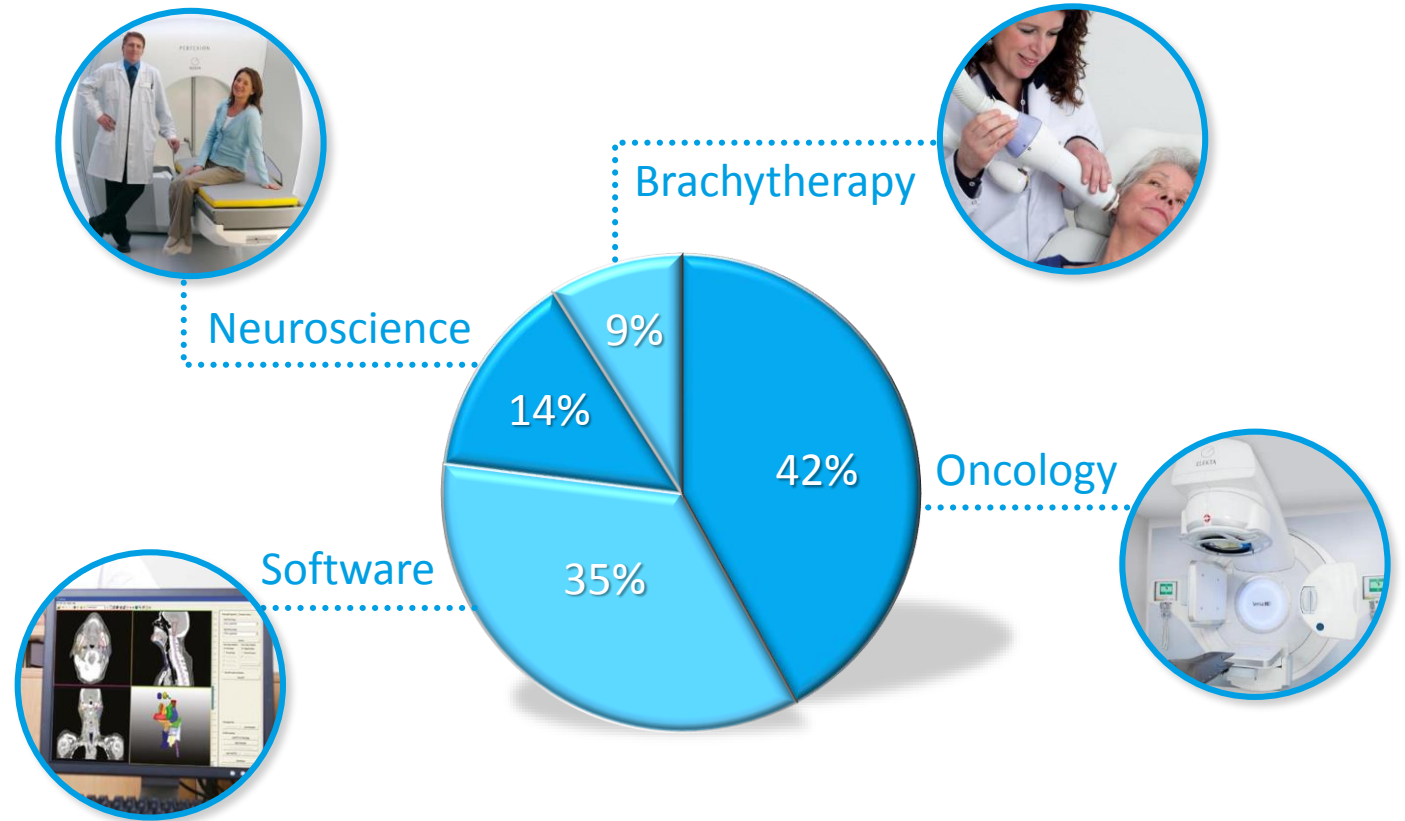


R&D key programs and spend

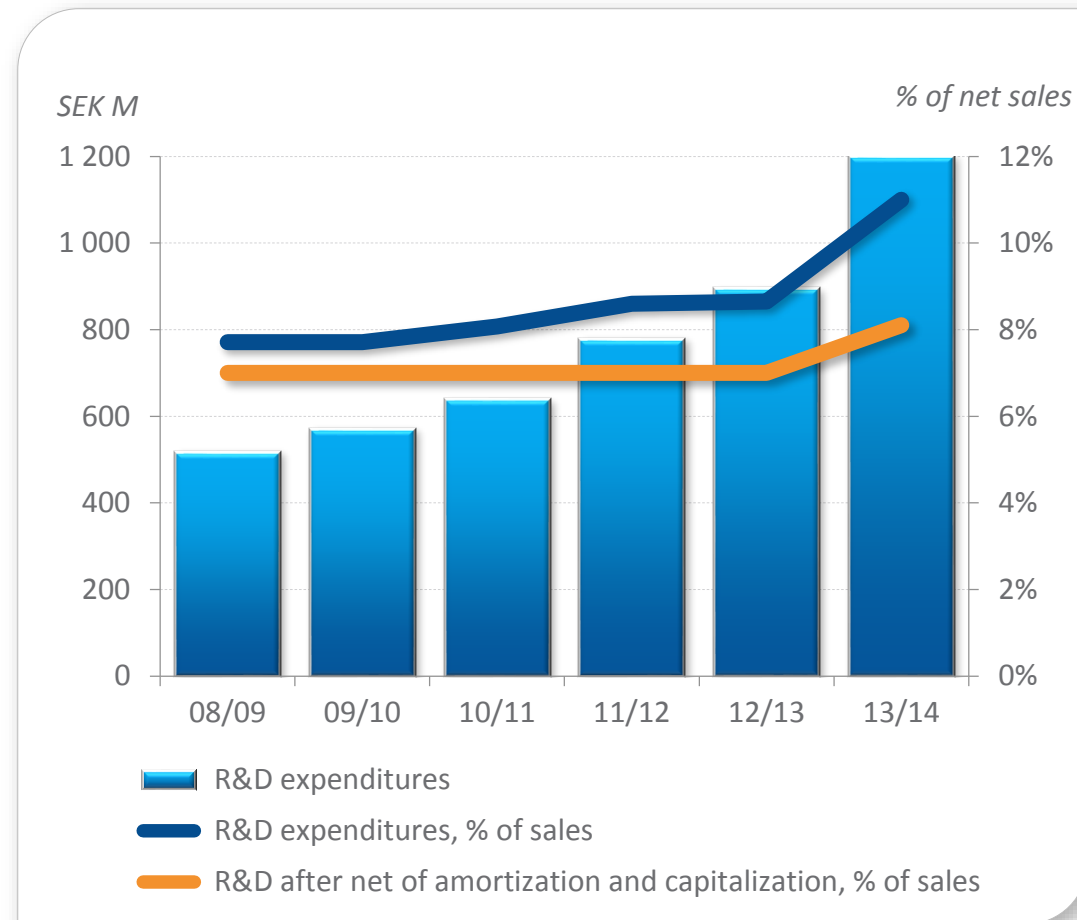
Fiscal year 2014/15

Main Elekta R&D programs:

- Atlantic
- Information Guided Cancer Care
- Next generation Gamma Knife
- Vision 2020 for Brachytherapy



R&D investments for future growth



- 2013/14: step change in R&D investments
 - MRI-guided radiation therapy system
- Expected to grow more in line with sales going forward
- Return to R&D level of around 8% from 2018

Atlantic launch and price



| <i>Planning</i> | <i>Ambition</i> |
|--|--------------------|
| Consortium orders – research systems | 8 |
| Regulatory approvals - CE Mark, 510(k) | During 2017 |
| Launch and taking commercial orders | 2017 |
| First deliveries of commercial orders | 2018 |
| Total orders and deliveries during ramp up phase (<i>until 2019</i>) | 75 |
| Average price | ± 4 times Versa HD |

Market expectations

- Most top RT centers in the world are interested
- Over 100 hospitals have asked for bunker specifications
- Atlantic to be expected standard of care within 10 years
- High potential to Grow the Pie



Collaboration enables Elekta innovation success

- Unique 12 year research collaboration with UMCU regarding Atlantic
- Philips as MRI technology partner
- Strong engagement with members of Atlantic consortium







Atlantic positioning

Dee Mathieson

Senior Vice President, Oncology Business Line Management

Utrecht, 22 January 2015



The Future of Cancer Care

Today's RT:

IGRT with VMAT is
Standard of Care

Atlantic

Increased Accuracy
AND Precision

Real-Time Adaption
(motion, shape, biology)

Tomorrow's RT:

- Better outcomes
- Lower costs
- Potential for new indications

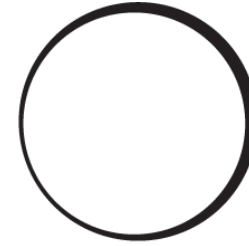
Pioneering

Partnership

International

Visionary

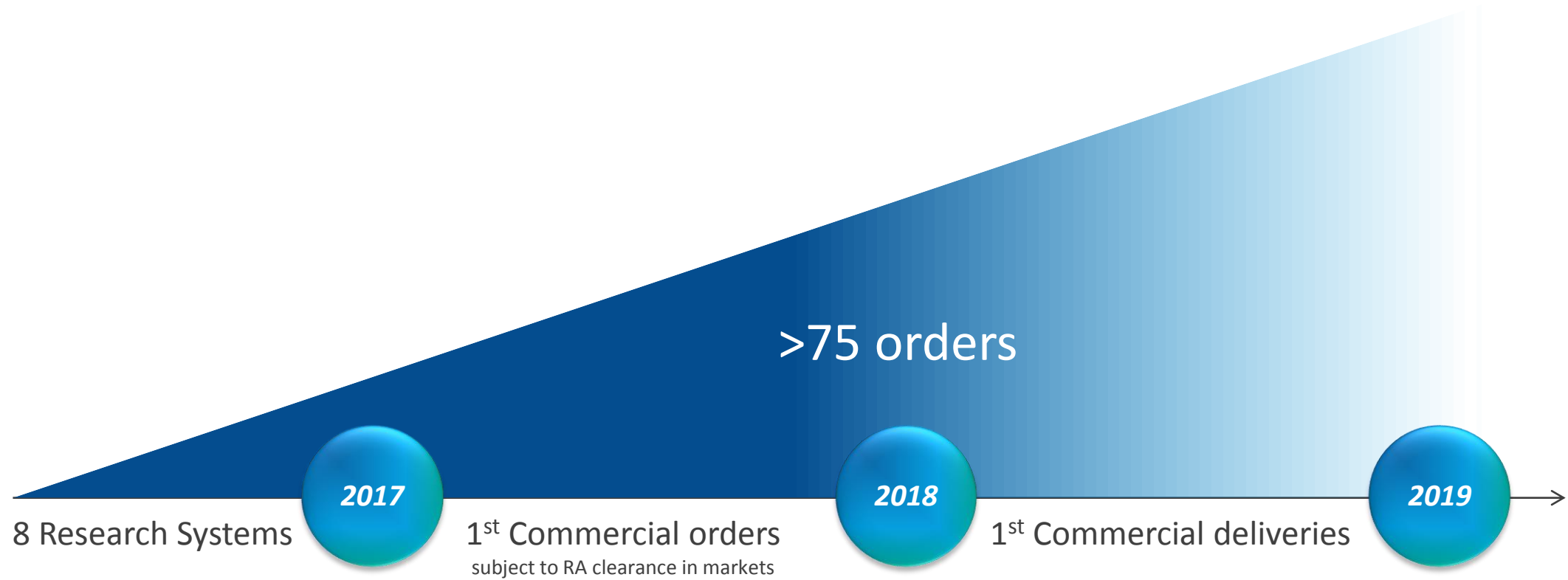
Leading



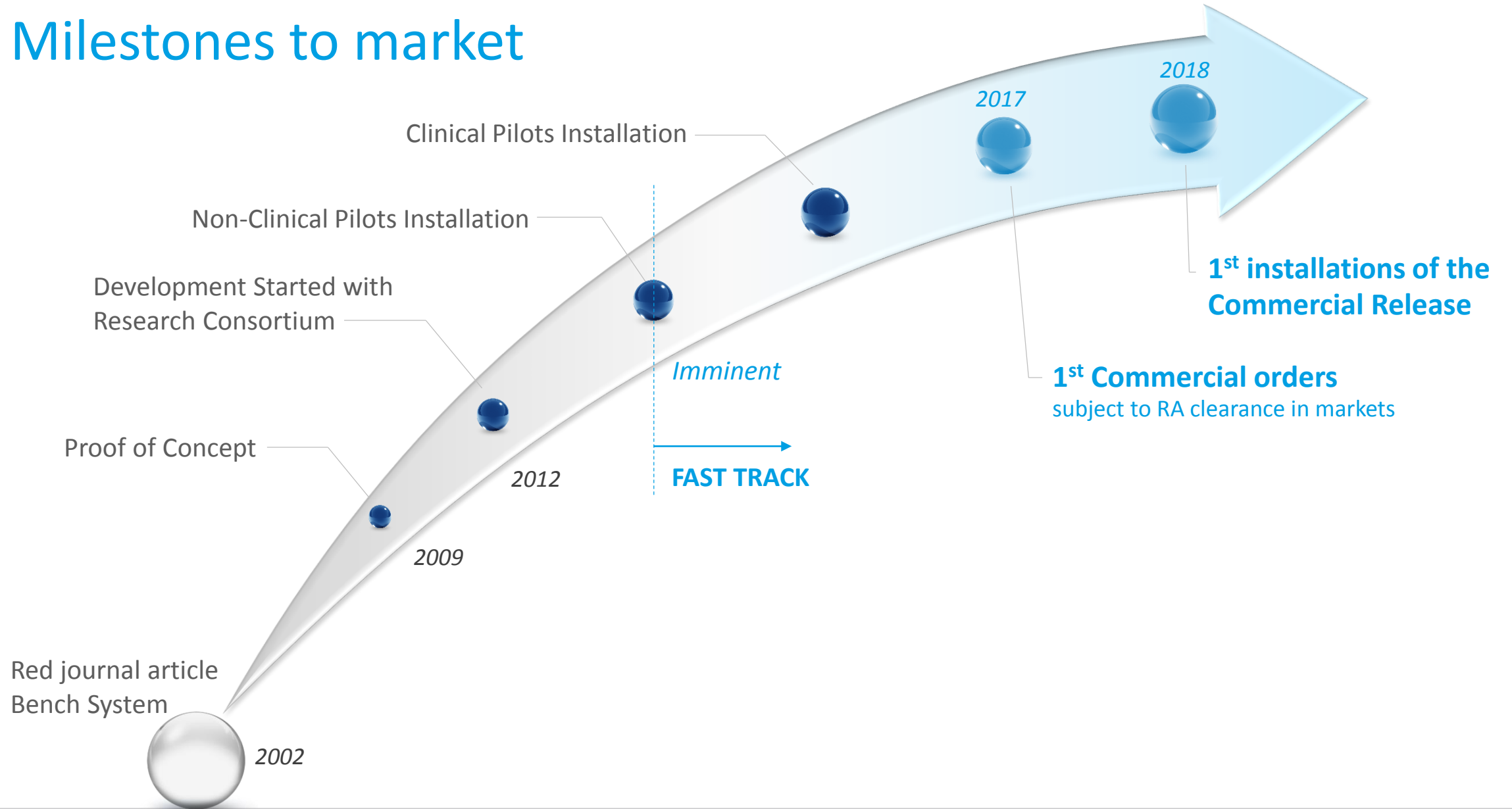
ATLANTIC.
CONSORTIUM

To discover and enhance
new technologies that focus
on improving and prolonging
peoples lives.

Introduction & Ramp-up



Milestones to market

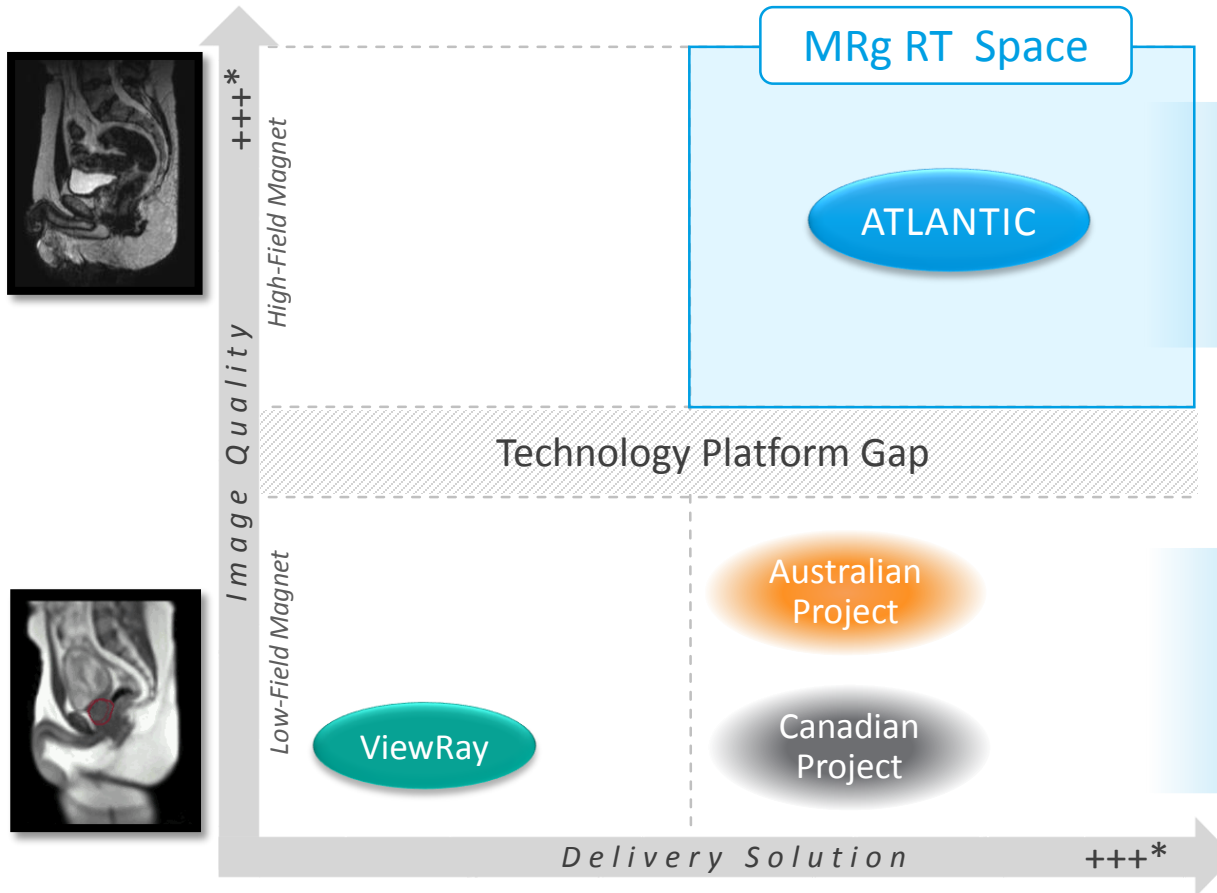


Strong interest and potential



- Most of the leading RT centres worldwide have expressed interest
- The early adopters are willing to invest up front and partner with us to demonstrate the Clinical & Economic value of Atlantic
- Key opinion leaders share a consensus that Atlantic will deliver superior Clinical Value at lower costs
- Treatment room comparable to linac room

Atlantic sets the bar



Through the Elekta-Philips partnership, Atlantic will deliver the full potential of MRgRT that requires best of both worlds:

- Image quality & performance of high-field MRI
 - Beam accuracy of modern delivery technology
 - **Real-time** Adaptive S/W solution
-
- Low Field magnet (e.g. 0.3T) vs. high-field magnet (e.g. 1.5T):
 - Image Quality degraded by a factor **5**
 - Imaging Speed degraded by a factor **25**
 - Australian and Canadian systems are built to be novel research platforms

Radiation Therapy Landscape

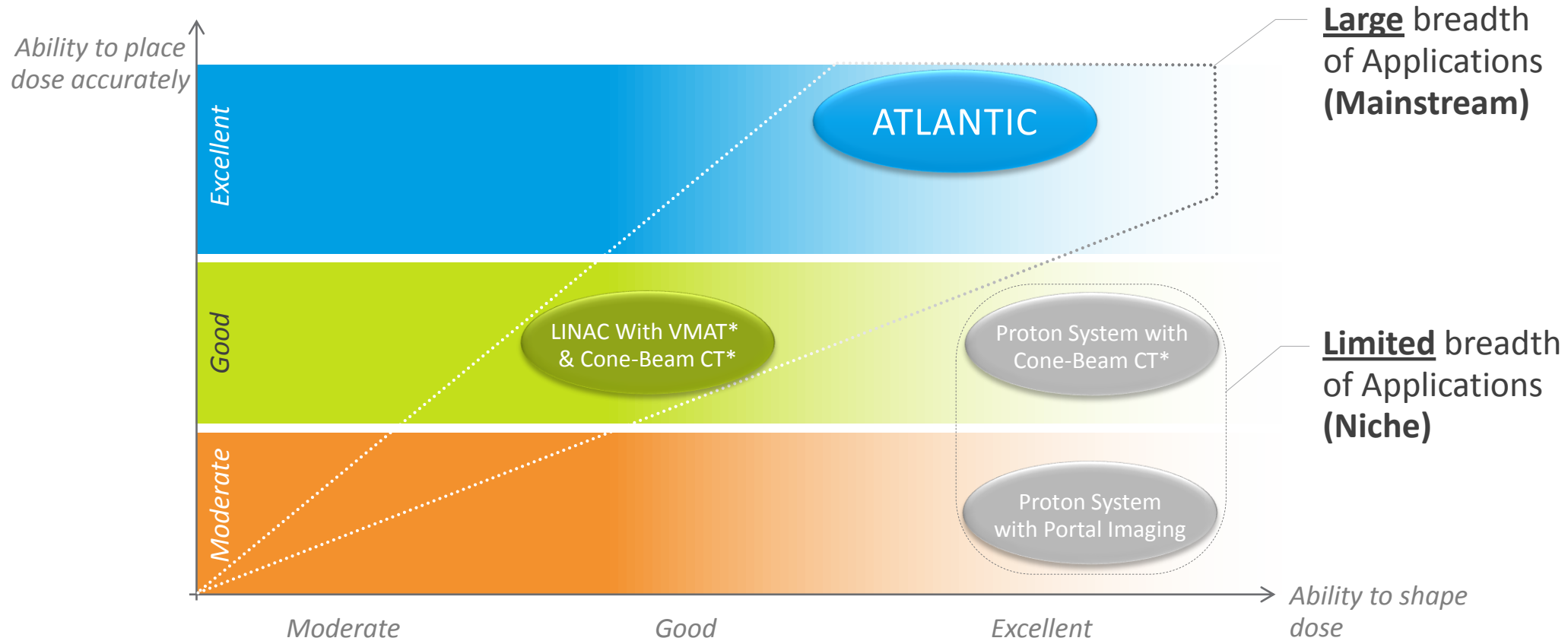
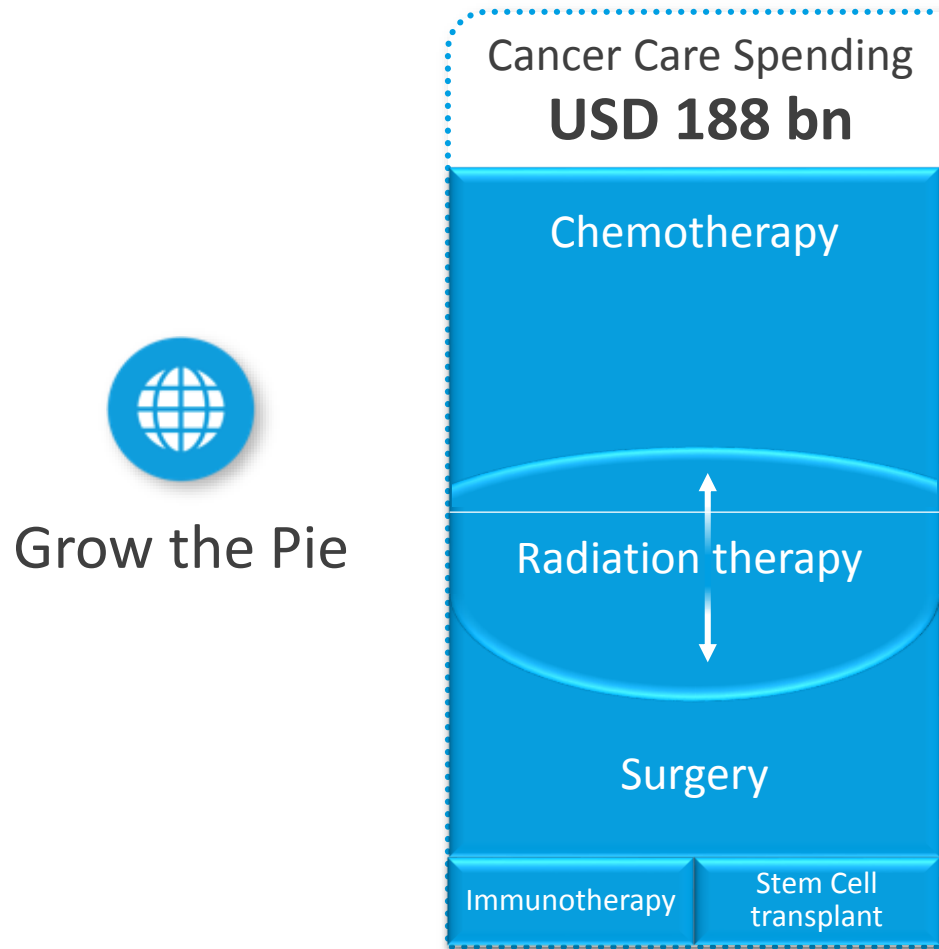


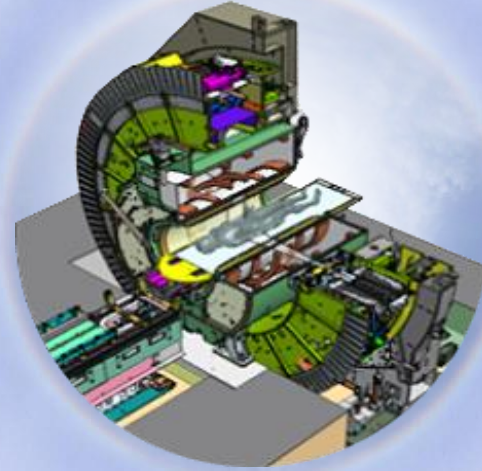
Image guidance is critical for accurate treatment

Alignment with Strategic Agenda



Grow the Pie

Halo Effect



Innovation leadership





Atlantic Update

Kevin Brown

Head of Scientific and Medical Affairs

Utrecht, 22 January 2015



Progress in MRI-guided radiation therapy

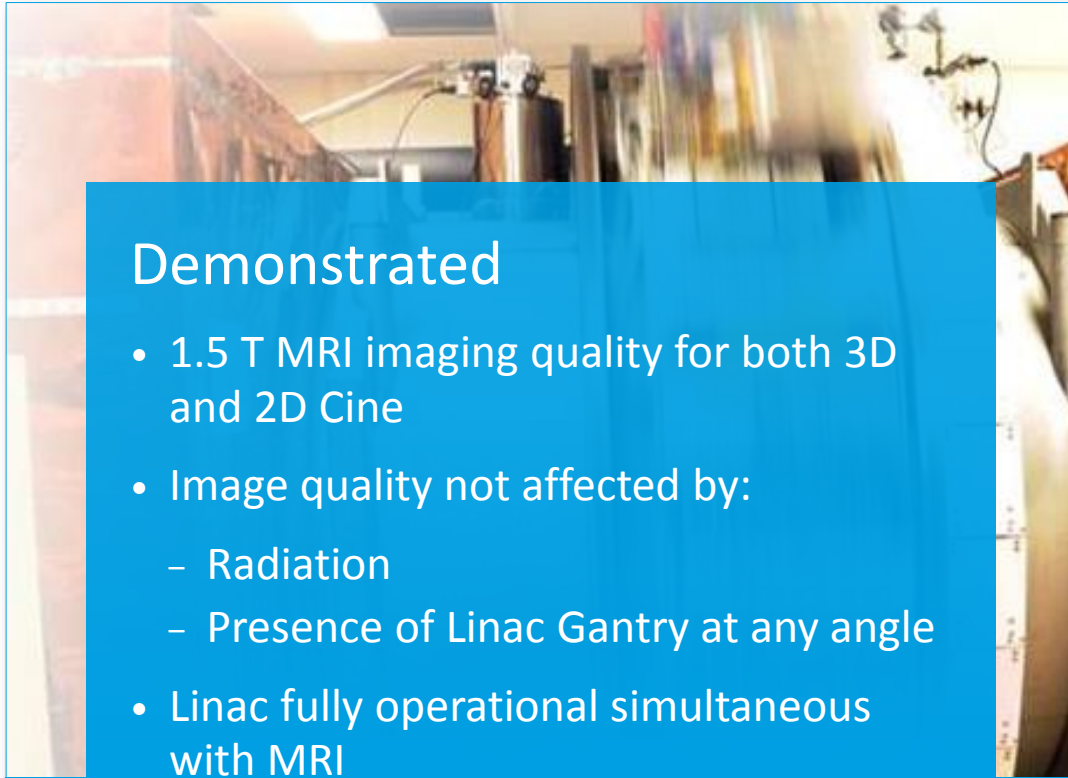


Previously we have shown the experimental system at Utrecht, the Netherlands



First generation high field MRI-guided radiation therapy system is now under test

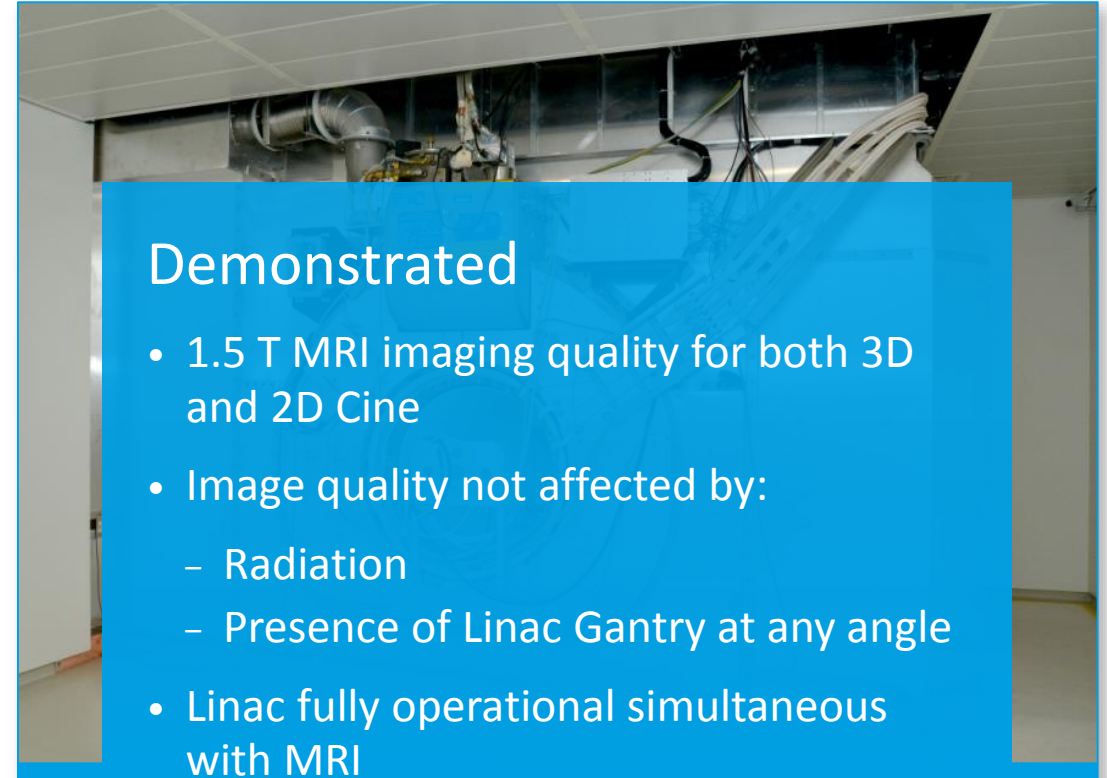
Progress in MRI-guided radiation therapy



The image shows a blurred view of a radiation therapy room with a linac gantry and MRI equipment. A blue text box is overlaid on the bottom half of the image.

Demonstrated

- 1.5 T MRI imaging quality for both 3D and 2D Cine
- Image quality not affected by:
 - Radiation
 - Presence of Linac Gantry at any angle
- Linac fully operational simultaneous with MRI
- Small effect of Gantry speed on image quality observed



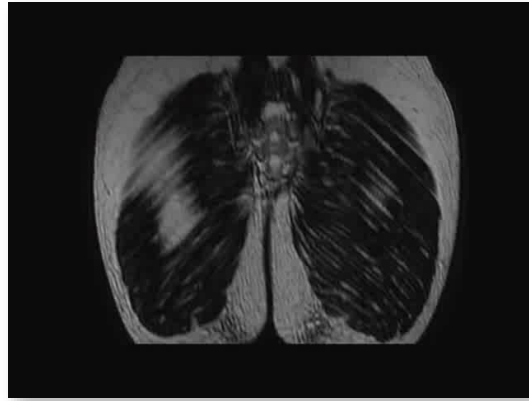
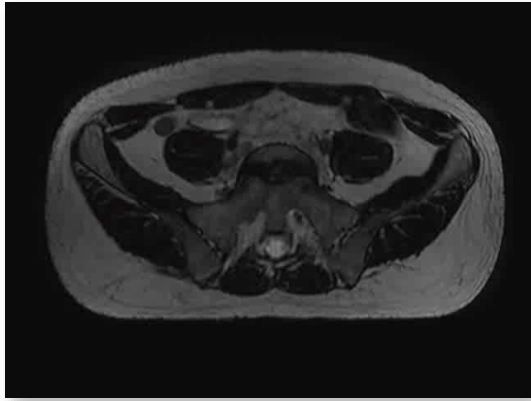
The image shows a clear view of a radiation therapy room with a linac gantry and MRI equipment. A blue text box is overlaid on the bottom half of the image.

Demonstrated

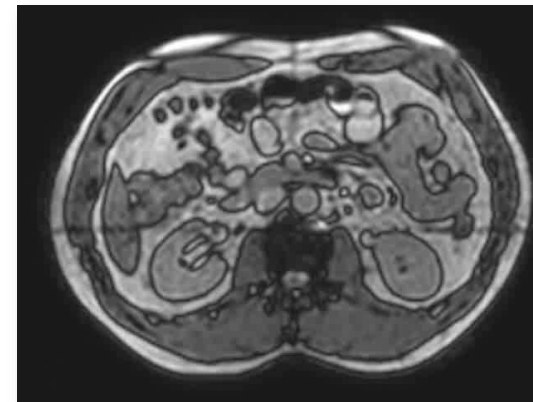
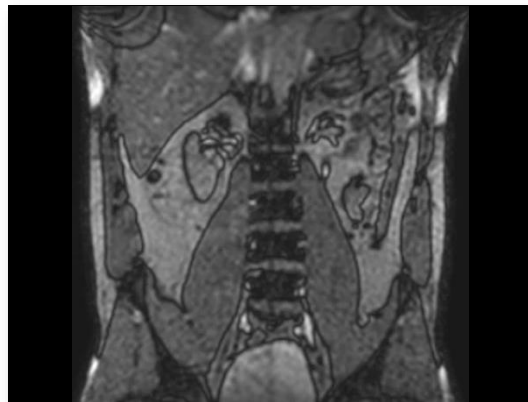
- 1.5 T MRI imaging quality for both 3D and 2D Cine
- Image quality not affected by:
 - Radiation
 - Presence of Linac Gantry at any angle
- Linac fully operational simultaneous with MRI
- Image quality within specification at all of Gantry speeds

First generation high field MRI-guided radiation therapy system

Example volunteer images



High resolution (0.7mm x 0.7mm x 1mm), 3D acquisition with exquisite image quality in all planes



High frame rate, multi-planar acquisition for motion monitoring

Elekta Atlantic consortium established

The consortium aims to:

- Demonstrate improved patient outcomes for existing radiation therapy indications
- Extend radiation therapy with new treatment techniques and be able to treat more indications

Each consortium member will have a MR linac for:

- Identifying clinical benefits and techniques
- Resolving clinical and technical challenges to implement these techniques
- Conducting clinical research to demonstrate the clinical value of the techniques



Leading consortium members



7 sites
have signed up

*About 100 people spread all over the world
Including the Elekta and Philips project teams we reach about 200-300 people*

Relative strengths of MRI and CBCT

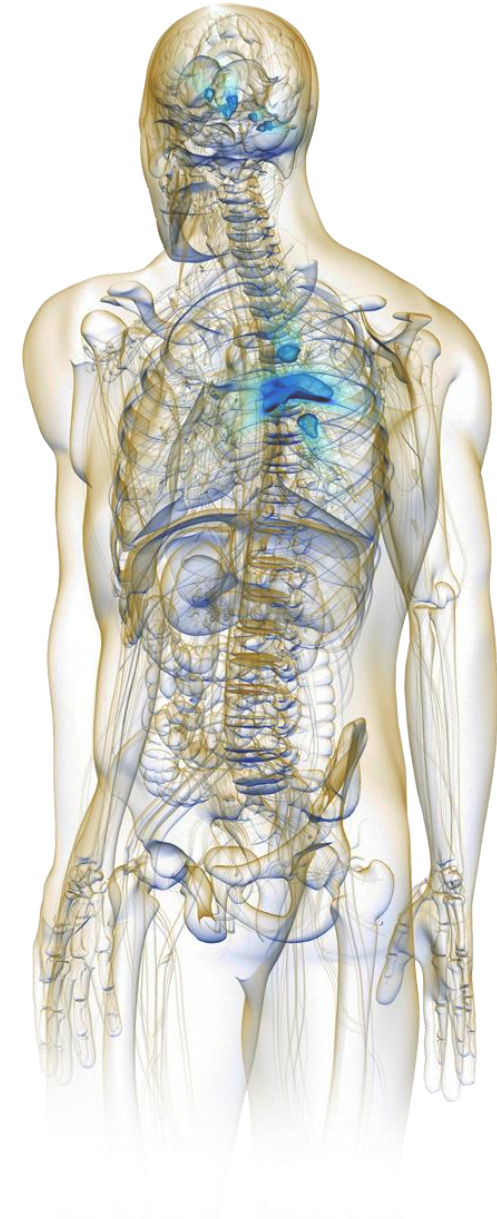
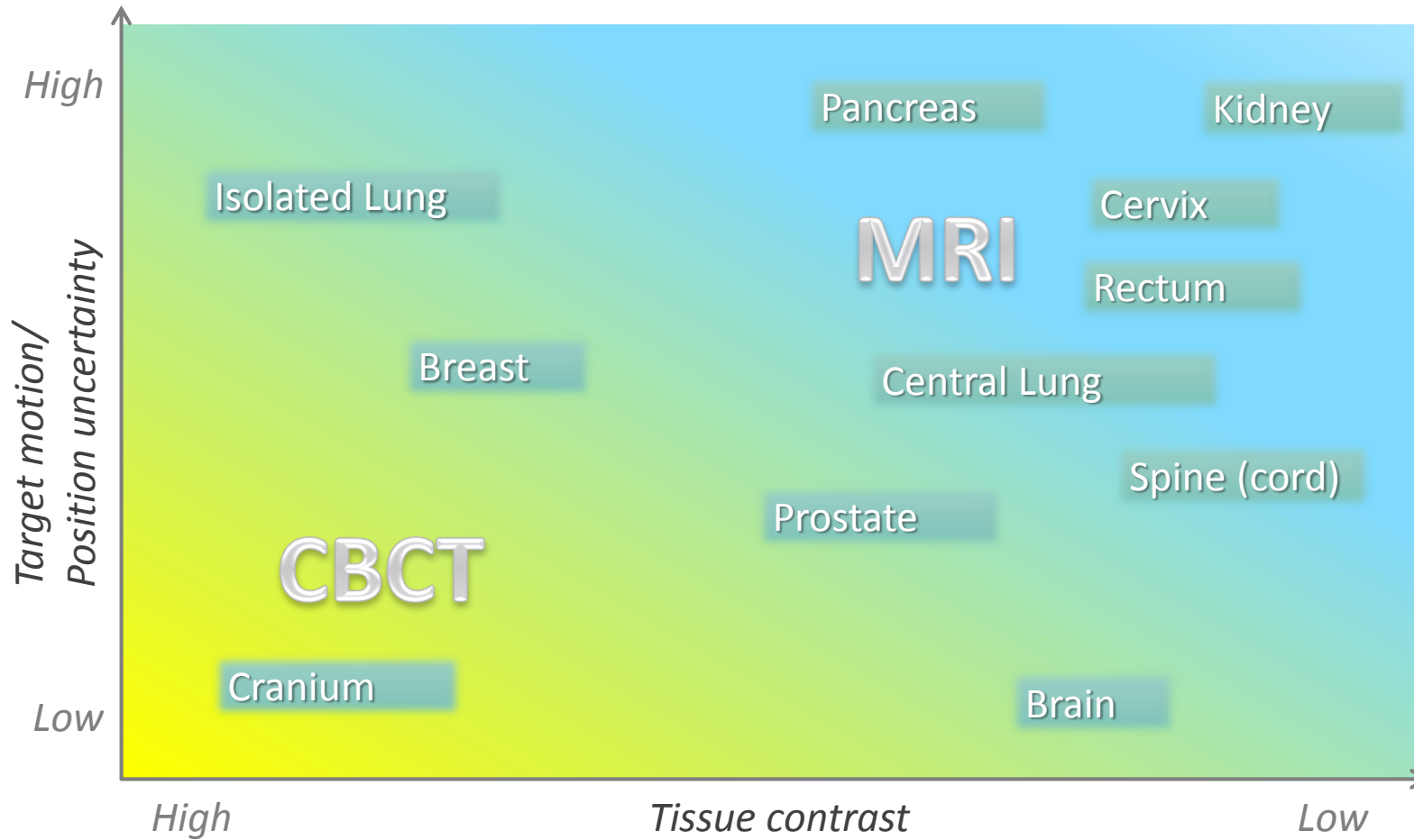
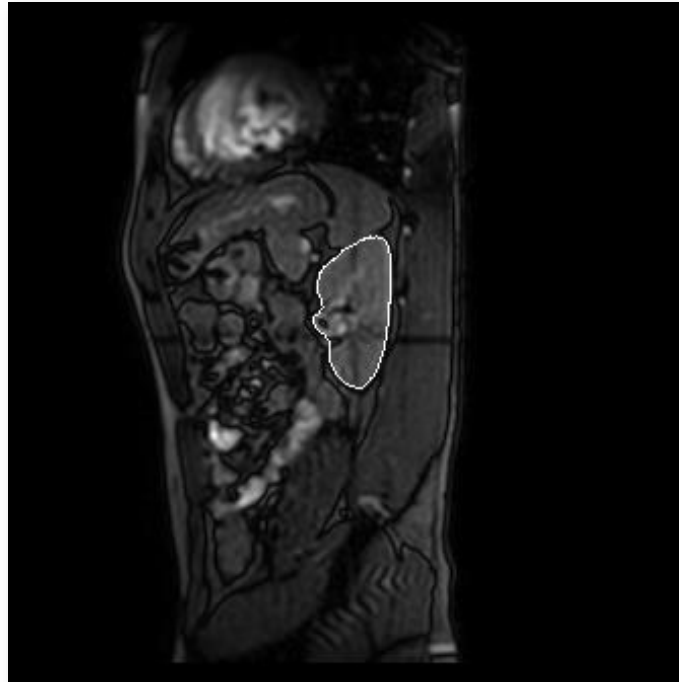
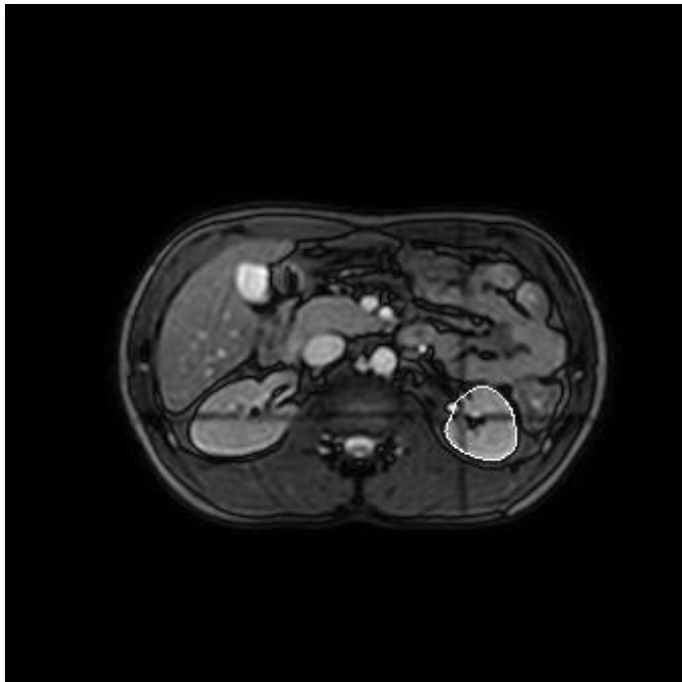


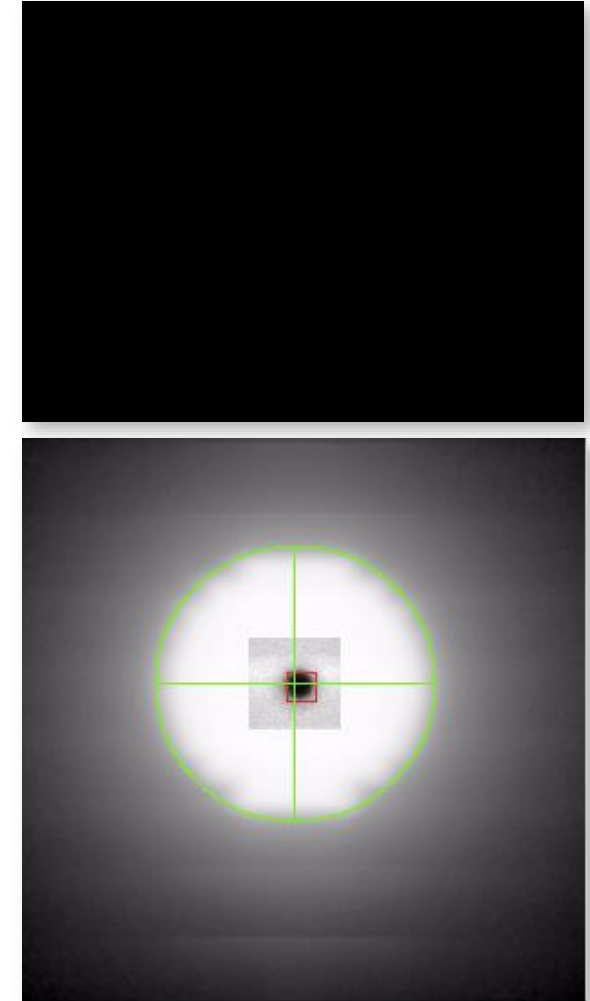
Image and detect the target in real time

- Localization results for Kidney
- Alternating axial, coronal and sagittal slices
- Acquired and processed in 200 ms

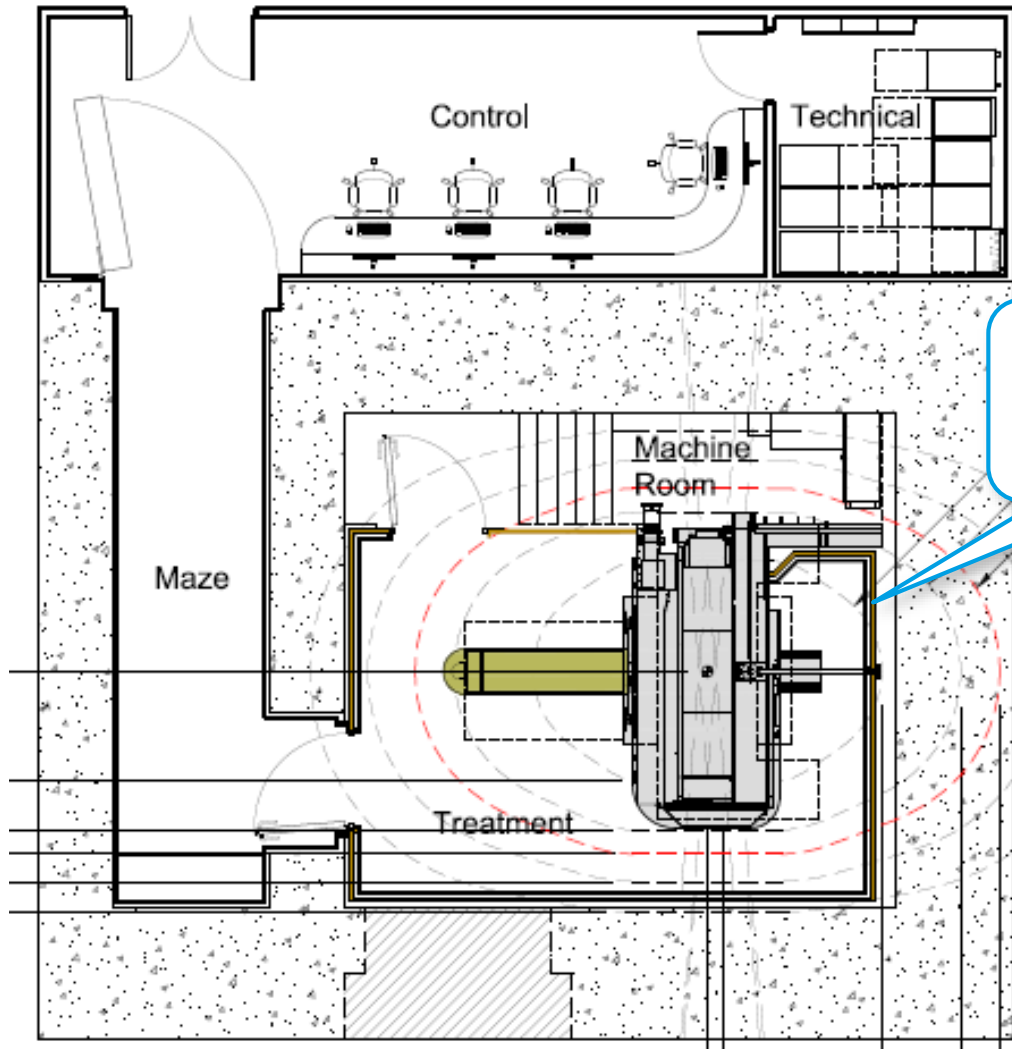


ICR demonstrate feasibility of dynamic target tracking *using Elekta Agility as a test platform*

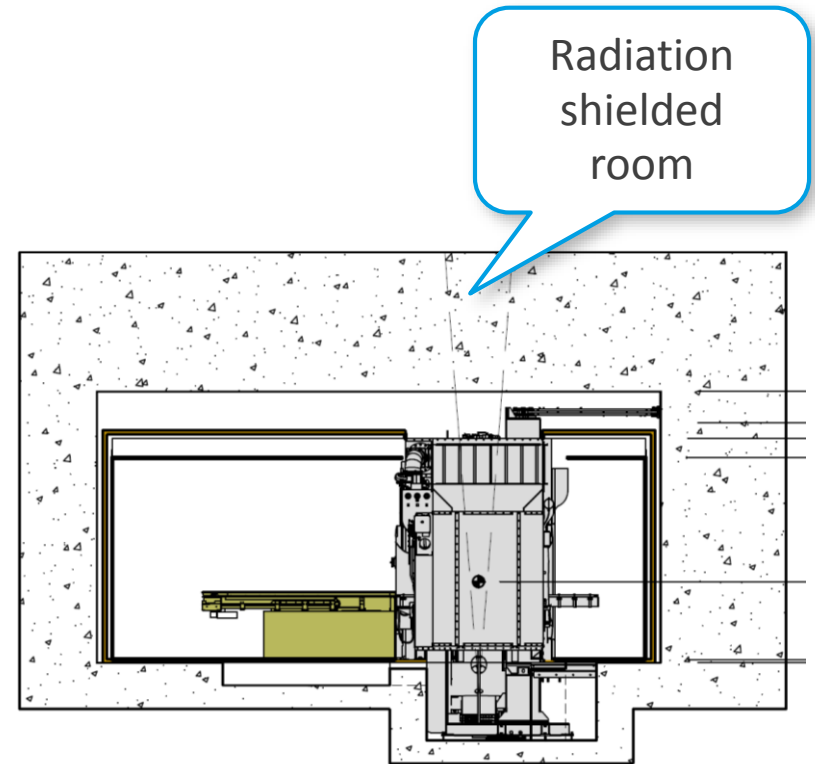
- Fast leaf motion including integrated Dynamic Leaf guides
- Fast dynamic orthogonal jaws
 - Seamlessly manages target motion orthogonal to leaf travel
- Exceptionally Low latency
 - Less than 100 ms
- Excellent dynamic accuracy
 - RMS Error typically 1mm
- Negligible residual dose error*
 - Test of 8 typical clinical motions
 - No detectable error at 2mm/2%
 - Less than 2% of points at 1mm/1%



Atlantic room is comparable to a Linac room



RF shielded room



Radiation shielded room

Recent progress

- Testing at UMCU continues
 - Successfully reproduced all the proof of concept tests on commercial grade system
 - All performance specs have been met or exceeded
- Feasibility of following moving targets with the MLC in real time demonstrated
 - Done without any surrogates and combined with clear images that make correct system operation evident

